

St. Feock & Pill Creek Regatta 2011 - Sailing Instructions

1. The Organising Authority is POFSA (Port Of Falmouth Sailing Association)
2. RULES
 - 2.1. The Racing will be governed by the rules as defined in the Racing Rules of Sailing 2009- 2012 (RRS) and the St. Feock & Pill Creek regatta Notice of Race 2011.
 - 2.2. Class Rules for the applicable classes will apply
 - 2.3. The RYA Prescriptions will apply
 - 2.4. Local Rules: –
 - 2.4.1. Commercial Shipping
 - 2.4.1.1. Commercial vessels constricted by their draft or size form moving exclusion zones which competitors are to treat as obstructions. The exclusion zone extends to 100 metres on all sides of the vessel and includes tugs, pilot boats and safety boats escorting the vessel. No competitor is to enter the exclusion zone and if becalmed is to use their engine or other means of propulsion to move out of the way. This should only be sufficient to move out of the exclusion zone and the course steered and distance traveled should be the shortest distance to move the competitor clear of the commercial vessel and its exclusion zone. This changes RRS 42.
 - 2.4.1.2. Competitors who unnecessarily interfere with commercial shipping, divers, submerged divers, and dive boats bring the sport into disrepute and risk protest by the Race Committee under RRS 2A. Any complaint by the harbour authority will automatically initiate a protest hearing.
 - 2.4.2. Dive Boats
 - 2.4.2.1. A 30 metre zone around a dive boat flying code flag A, an orange pillar mark indicating a diver beneath the surface and a diver on the surface are obstructions. A boat shall not enter the 30 metre zone.
 - 2.4.3. Boats shall not race either through or in any area where there are either moorings, or moored or anchored yachts
 - 2.4.4. VHF Radio

The Race Committee may use VHF marine Channel 72 to transmit course and race start information. The count down, postponement, general and individual recalls and boats on course side in the minute before the start may also be broadcast on channel 72. From the time of the first course broadcast to the completed start of the last class to start no boat shall broadcast on channel 72 or 77 other than for reasons of an emergency requiring immediate assistance.
3. Notices to competitors and Changes to Sailing Instructions will be posted on the <http://www.loebeachregatta.co.uk/> website. Any changes to sailing instructions will be posted by 1300 on the Regatta day
4. **Schedule of races**

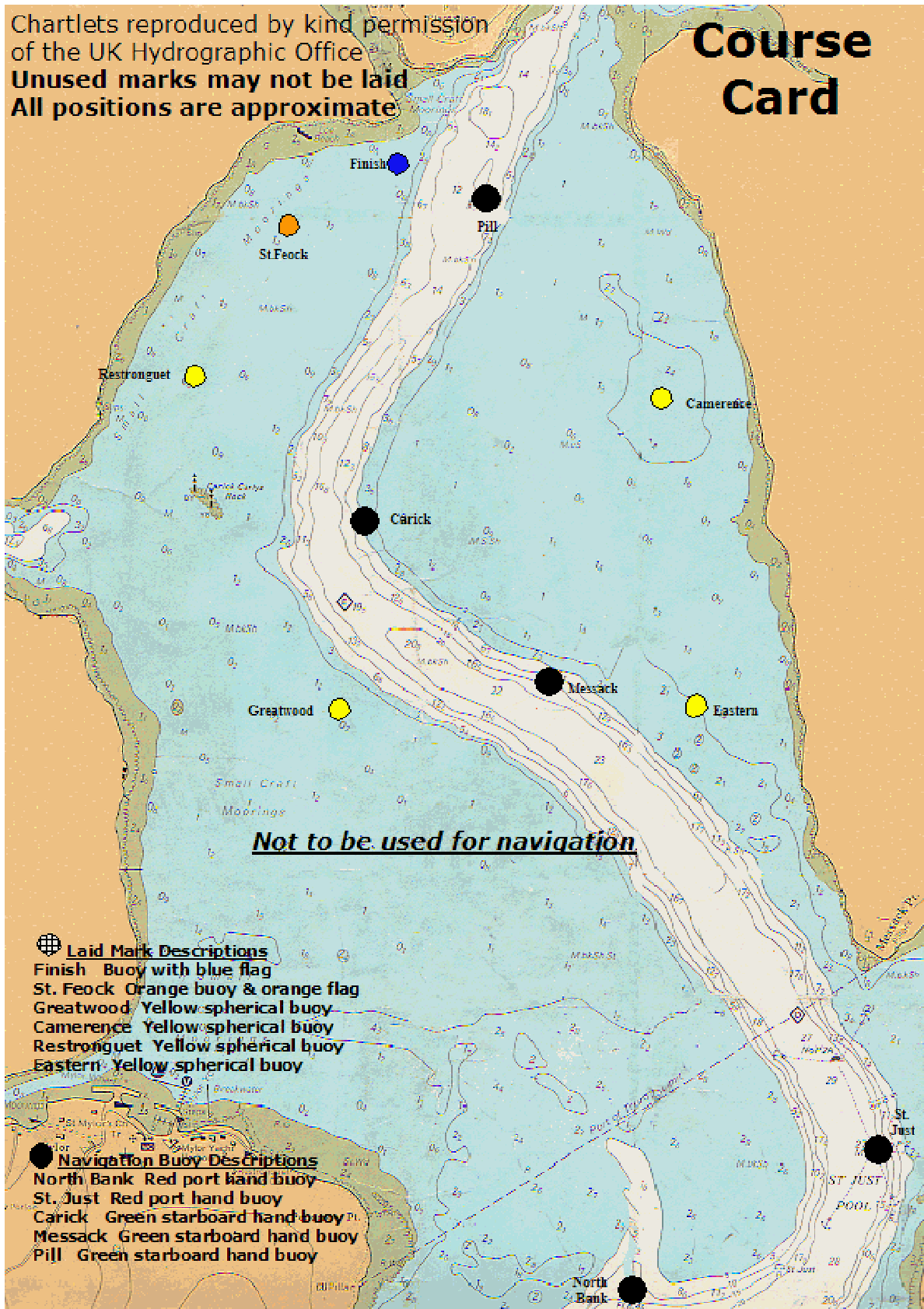
Start Time	Flag	Class	Course
1435		Warning Signal	
1440	B	Large Working Boats	A
1445	C	Small Working Boats	A
1450	E	PY 1060 & Below	A
1455	V	Sunbeams	B
1500	U	PY 1061 & Above	B
1505	R	Dinghies PY 1099 & Below	B
1510	W	Ajax and fixed keel day boats.	B
1515	T	Dinghies PY 1100 and above	B
1520	G	Gaffers (non-working boats)	B
1520	D	St Mawes OD	B
1525	H	Shrimpers	B
1530	J	Junior Race	JR

5. Class Flags
 - 5.1. Class flags shall be flown from the backstay or mainsail leech with the exception of classes V and D who are not required to display a class flag.
6. Courses
 - 6.1. Courses for each class will be indicated by letters on the side of the committee boat. The top row will give the class or classes and the bottom row the course to be sailed by that class or classes.
 - 6.2. All courses may be broadcast to all boats on Channel 72. The course for each class may be broadcast between that class preparatory signal and start.
7. The Start
 - 7.1. The start sequence and timing is listed in Race Schedule above.
 - 7.2. Starting Races
 - 7.2.1. RRS 26 shall apply.

Starting times shall be taken from the visual signals. A failure or omission of a broadcast of start times shall be disregarded
 - 7.3. Starting Line will be between a mast displaying an orange flag on a Committee boat within the Carrick Roads, and an orange buoy.
 - 7.4. After rounding the first mark, boats shall not pass through the starting line.
 - 7.5. All boats shall keep clear of the starting line until their warning signal has been made.
 - 7.6. A boat attempting to start later than 4 minutes after her starting signal will be scored Did Not Start. This changes rule A4.1.
8. General Recalls
 - 8.1. RRS rule 29.2 & the RRS flag definitions are changed as follows. Flag First Substitute will be displayed with two sound signals. First Substitute will be flown until all boats have returned but not later than 4 minutes after the Starting Signal which ever is earlier. The recalled class will start after the last scheduled start.
 - 8.2. In the event of a General Recall for more than one class, the sequence of the starts of recalled classes will follow the start order detailed in these sailing instructions.
9. The Finish
 - 9.1. No boat shall sail through the finish line unless she is finishing
 - 9.2. The finishing line will be a transit between a mast displaying a blue flag on a Committee Boat and a buoy with a blue flag.
10. Time limit
 - 10.1. The time limit for all races is 1700. If the first boat of a class finishes before 1700 an extension of 30 minutes will be given to other boats in that class.
11. Penalties
 - 11.1. For B, C, and V classes only, rules 44.1 and 44.2 are amended for an incident exclusively between one or more boats in the same class by substituting "Two turns" with "One Turn to include 1 tack and 1 gybe".
12. Protests
 - 12.1. The protest time limit is 1800. All protests will be subject to a £10 charge, donated to RNLI.
 - 12.2. Protest forms are available from the Regatta Office. Protests shall be delivered there within the protest time limit.
 - 12.3. Protests will be heard at RCYC at 7 pm on the Thursday following the regatta.
13. PY Handicaps
 - 13.1. The Sailing Committee may allocate a Regatta handicap or local club trial number to a boat that does not have a primary or secondary PY.
14. Retirement
 - 14.1. A boat that retires from a race shall notify the race committee within 60 minutes after finishing or retiring. Retirements may be reported to the race committee by radio on Channel 72, **or by calling the race officer directly on 07810 867887**. Competitors not adhering to this procedure may be subject to protest from the race committee and scored DNE (non-discardable disqualification). This changes rule A4.1.
15. Prizes
 - 15.1. Prizes will be awarded by the Regatta Committee.
16. Decision to Race.
 - 16.1. The responsibility for a boats decision to participate in a race or to continue racing is hers alone. Boats participating in the Regatta do so entirely at their own risk. See the Notice Of Race.

Chartlets reproduced by kind permission
of the UK Hydrographic Office
Unused marks may not be laid
All positions are approximate

Course Card



List of Courses

Courses for each class will be indicated by letters on the side of the committee boat.

The top row will give the class or classes and the bottom row the course to be sailed by that class or classes.

The finish of all courses will be between the Committee Boat and buoy with a blue flag on it.

North Wind		N.W.Wind		West Wind		S.W.Wind		South Wind		S.E.Wind		East Wind		N.E.Wind	
Course 1	A	Course 2	A	Course 3	A	Course 4	A	Course 5	A	Course 6	A	Course 7	A	Course 8	A
Pill	port	St Feock	port	Restronguet	port	Greatwood	port	Greatwood	port	St Just	port	Camerance	port	Camerance	port
St Feock	port	Nth Bank	port	Eastern	Stbd	Eastern	Stb	Eastern	Stb	Eastern	port	Pill	port	Restronguet	Stbd
Greatwood	port	St Just	port	Greatwood	port	Nth Bank	Stb	Nth Bank	port	Greatwood	Stb	St Feock	port	Pill	port
Nth Bank	port	Messack	Stb	St Just	Stbd	Pill	port	St Just	port	Camerance	port	Restronguet	port	St Feock	port
Pill	port	Camerance	port	Nth Bank	Stb	St Feock	port	Camerance	port	Pill	port	Greatwood	port	Greatwood	port
StFeock	port	Pill	port	Pill	port	Greatwood	port	Pill	port	St Feock	port	Eastern	Stbd	Nth Bank	port
Greatwood	port	StFeock	port	StFeock	port	Eastern	Stb	St Feock	port	St Just	port	Nth Bank	port	Messack	Stbd
Nth Bank	port	Nth Bank	port	Restronguet	port	NthBank	Stb	Greatwood	port	Eastern	port	St Just	port	Camerance	port
Pill	port	St Just	port	Eastern	Stbd	Pill	port	Eastern	Stb	Greatwood	Stb	Camerance	port	Restronguet	Stbd
St Feock	port	Messack	Stb	Greatwood	port	St Feock	port	Nth Bank	port	Camerance	port	Pill	Port	Pill	port
		Camerance	port	St Just	Stbd			St Just	port	Pill	port	St Feock	Port	St Feock	port
		Pill	port	Nth Bank	Stb			Camerance	port	St Feock	port	Restronguet	port	Greatwood	port
		St Feock	port	Pill	port			Pill	port			Greatwood	port	Nth Bank	port
				St Feock	port			St Feock	port			Eastern	Stbd	Messack	Stbd
												Nth Bank	port	Pill	port
												St Just	port	St Feock	port
												Camerance	port		
												Pill	Port		
												St Feock	Port		
Course 1	B	Course 2	B	Course 3	B	Course 4	B	Course 5	B	Course 6	B	Course 7	B	Course 8	B
Pill	port	St Feock	port	Restronguet	port	Greatwood	port	Greatwood	port	Messack	port	Camerance	port	Camerance	port
St Feock	port	Greatwood	port	Eastern	Stb	Messack	port	Messack	port	Camerance	port	Pill	port	Restronguet	Stbd
Carrick	port	Camerance	port	Messack	Stb	Pill	port	Camerance	port	Pill	port	St Feock	port	Pill	port
Messack	port	Pill	port	Camerance	port	St Feock	port	Pill	port	St Feock	port	Restronguet	port	St Feock	port
Pill	port	St Feock	port	Pill	port	Restronguet	port	St Feock	port	Carrick	port	Greatwood	port	Carrick	port
St Feock	port	Greatwood	port	St Feock	port	Greatwood	port	Greatwood	port	Messack	port	Messack	port	Camerance	port
Carrick	port	Camerance	port	Restronguet	port	Messack	port	Messack	port	Camerance	port	Camerance	port	Restronguet	Stbd
Messack	port	Pill	port	Eastern	Stb	Pill	port	Camerance	port	Pill	port	Pill	port	Pill	port
Pill	port	St Feock	port	Messack	Stb	St Feock	port	Pill	port	St Feock	port	St Feock	port	St Feock	port
St Feock	port			Camerance	port			St Feock	port			Restronguet	port	Carrick	port
				Pill	port							Greatwood	port	Pill	port
				St Feock	port							Messack	port	St Feock	port
												Camerance	port		
												Pill	port		
												St Feock	port		